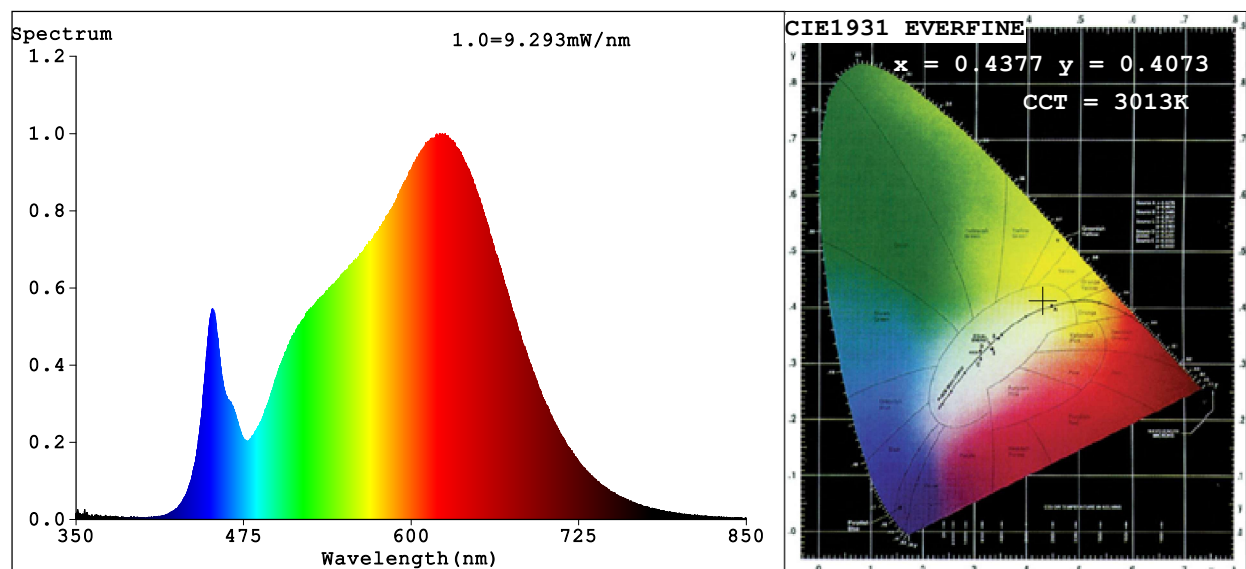


## Spectrum Test Report



### Color Parameters:

Chromaticity Coordinate:  $x=0.4377$   $y=0.4073$   $u'=0.2497$   $v'=0.5228$

CCT=3013K (Duv=0.0012) Dominant WL:Ld =582.3nm Purity=53.6%

Ratio:R=24.3% G=73.0% B=2.8%; Peak WL:Lp=621.3nm FWHM=163.8nm

Render Index:Ra=93.6 CRI=90.7 TM30:Rf=92 Rg=99

R1 =94 R2 =96 R3 =97 R4 =95 R5 =93 R6 =95 R7 =94

R8 =84 R9 =63 R10=90 R11=96 R12=79 R13=95 R14=98 R15=90

### Photo Parameters:

Flux = 461.3 lm Eff. : 56.36 lm/W Fe = 1.586 W

### Electrical parameters:

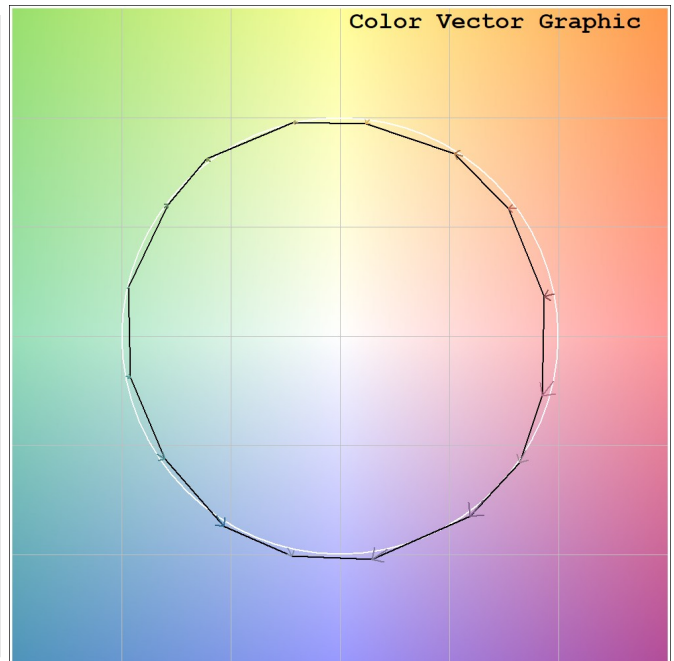
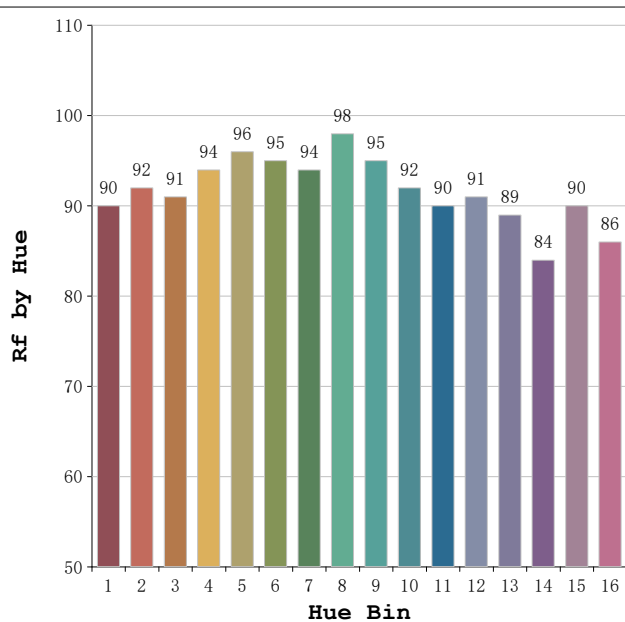
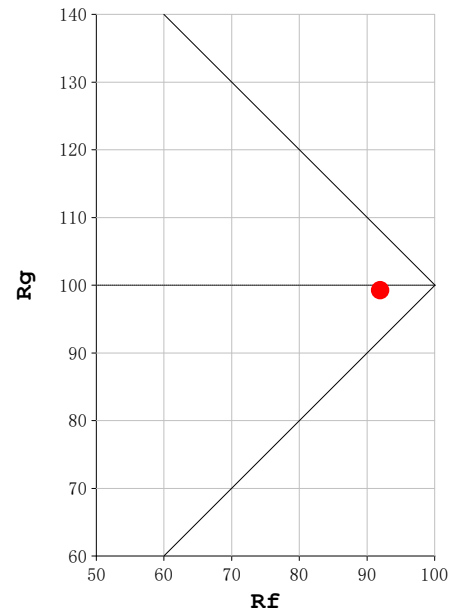
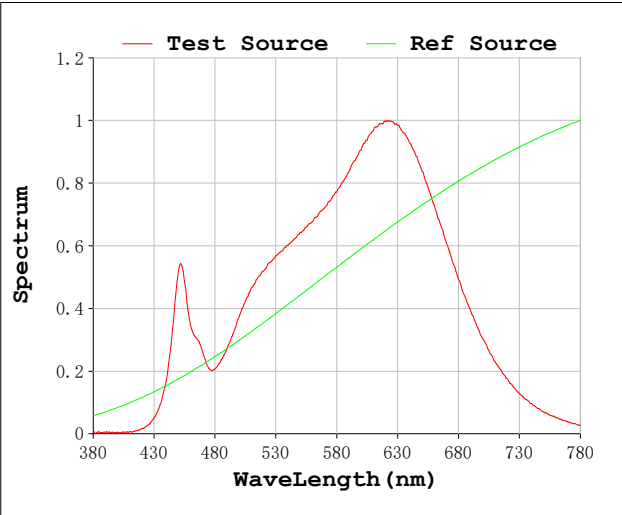
V = 230.10 V I = 0.03786 A P = 8.184 W PF = 0.9395

Status: Integral T = 2000 ms Ip = 32479 (50%)

Model:Focalis Axis 8 W  
Tester:Sergio Carneros  
Temperature:20Deg  
Manufacturer:Luz Negra

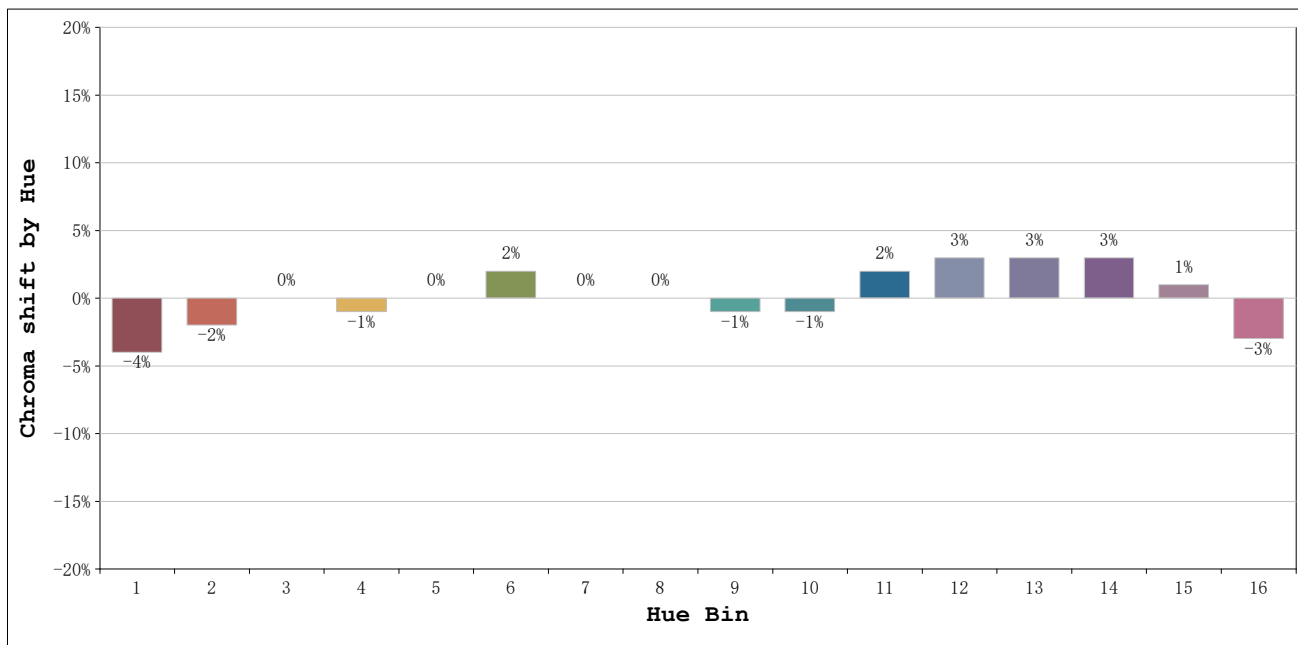
Number:3000K 45°  
Date:2026-03-20 12:40:03  
Humidity:50%  
Remarks:1 unidad ref.negro

**Rf: 92**      **CCT: 3013 K**      **u': 0.2497**  
**Rg: 99**      **Duv: 0.0012**      **v': 0.5228**



Model:Focalis Axis 8 W  
 Tester:Sergio Carneros  
 Temperature:20Deg  
 Manufacturer:Luz Negra

Number:3000K 45°  
 Date:2026-03-20 12:40:03  
 Humidity:50%  
 Remarks:1 unidad ref.negro



			Graphic shift(%)	
Hue Bin	Hue Angle	Rf	Chroma	Hue
1	0.0° - 22.5°	90	-4	0
2	22.5° - 45.0°	92	-2	2
3	45.0° - 67.5°	91	0	4
4	67.5° - 90.0°	94	-1	1
5	90.0° - 112.5°	96	0	2
6	112.5° - 135.0°	95	2	1
7	135.0° - 157.5°	94	0	-1
8	157.5° - 180.0°	98	0	0
9	180.0° - 202.5°	95	-1	1
10	202.5° - 225.0°	92	-1	4
11	225.0° - 247.5°	90	2	5
12	247.5° - 270.0°	91	3	2
13	270.0° - 292.5°	89	3	-7
14	292.5° - 315.0°	84	3	-8
15	315.0° - 337.5°	90	1	-5
16	337.5° - 360.0°	86	-3	-7

Model:Focalis Axis 8 W  
 Tester:Sergio Carneros  
 Temperature:20Deg  
 Manufacturer:Luz Negra

Number:3000K 45°  
 Date:2026-03-20 12:40:03  
 Humidity:50%  
 Remarks:1 unidad ref.negro